



Board of Directors

Hybrid Meeting Agenda

February 9th, 2023

Board of Directors Members Present in Person:

Members Present via Zoom:

**North Sound Behavioral Health
Administrative Services Organization
(North Sound BH-ASO) Staff Present:**

Guests Present:

1. **Call to Order and Introductions** – Chair
2. **Revisions to the Agenda** – Chair
3. **Approval of the January 12th, 2023, Minutes, Motion #23-08** – Chair.. Attachment
4. **Comments & Announcements from the Chair**
5. **Reports from Members**
6. **Comments from the Public**
7. **Diversity, Racial Equity, and Inclusion (DREI) Workgroup Update/Strategic Plan**
 - Michelle Osborne(Available at Meeting)Attachment
8. **Regional Navigator Program (RNP) Update:** James Dixon
 - [Recovery Navigator Program \(RNP\) | North Sound BH-ASO \(nsbhaso.org\)](#)
 - [Washington 2-1-1 | Search \(wa211.org\)](#)
9. **Report from the Advisory Board** (Available at Meeting) Attachment
10. **Report from the Finance Officer** (Available at Meeting) Attachment
11. **Report from the Governance Operations Committee**

All matters listed with the Consent Agenda have been distributed to each Member for reading and study, are considered to be routine, and will be enacted by one action of the Board of Directors with no separate discussion. If separate discussion is desired, the item may be removed from the Consent Agenda and placed on the Regular Agenda by request of a Member.

Consent Agenda (Available at Meeting)Attachment

Motion #23-09

- To review and approve the North Sound Behavioral Health Administrative Services Organization claims paid from January 1st, 2023, through January 31st, 2023, in the amount of \$.
- Payroll for the month of January in the amount of \$ and associated employer benefits in the amount of \$.

12. Action Items

For Board Approval

Personnel

Summary:

At the December Board of Directors meeting a 5% COLA was approved for employees as part of the annual administrative budget. The Executive Director position serves at the will of the Board which requires a separate motion to approve the 5% COLA for the position.

Motion #23-10

- Approve a 5% COLA for the Executive Director position with an effective date of January 1, 2023.

Summary:

Vote for Chair and Vice Chair

Nominations received as of 2/3/2023 were for Peter Browning (Chair) and Barry Buchanan (Vice Chair)

Motion #23-11

Approve Peter Browning as Chair and Barry Buchanan as Vice-Chair of the Board of Directors for 2023

13. DRAFT Report from the Executive Director Attachments

14. Adjourn

Next Meeting: March 9th, 2023



Board of Directors

Meeting Minutes

January 12th, 2023

Board of Directors Members Present in Person:

- **Peter Browning**, Commissioner; Skagit County, Board Chair
- **George Kosovich**, Public Health, designated alternate for Peter Browning, Commissioner; Skagit County
- **Cammy Hart-Anderson**, Human Services, designated alternate for Dave Somers; County Executive, Snohomish County

Members Present via Zoom:

- **Cindy Wolf**, Council Member, San Juan County; Vice Chair
- **Perry Mowery**, Behavioral Health Supervisor, designated alternate for Satpal Sidhu, County Executive; Whatcom County
- **Pat O'Maley Lanphear**, North Sound BH-ASO Advisory Board, Chair
- **Nicole Gorle**, Legislative Analyst, Snohomish County; designated alternate for Nate Nehring, County Council
- **Darcy Cheeseman**, Legislative Aid to Council Member, Sam Low, Snohomish County
- **Lynda Austin**, Human Services, Island County; designated alternate for Jill Johnson, Commissioner
- **Barbara LaBrash**, Human Services Manager, San Juan County, designated alternate for Cindy Wolf and newly appointed Jane Fuller

North Sound Behavioral Health Administrative Services Organization (North Sound BH-ASO) Staff Present:

- **Joe Valentine**, Executive Director, North Sound BH-ASO
- **Darrell Heiner**, Senior Accountant, North Sound BH-ASO
- **Margaret Rojas**, Assistant Executive Director, North Sound BH-ASO

- **Joanie Wenzl**, Clerk of the Board, North Sound BH-ASO

Guests Present:

- Erik Pederson; Chief Civil Deputy Prosecutor, Skagit County
- Joy Borkholder; Everett Herald

Guest Presenters:

- Ryan Stattenfield; Percival
- Alyssa Kenney; Percival
- Deena Garza; Auditor
- Jordan Helms; Auditor
- Michelle Osborne; DREI
- Nora Karena; DREI
- Toni Belcher; DREI

Call to Order and Introductions – Chair

- Board Members, Guests, and ASO Staff Introductions

Recently, there has been new staff at the ASO and new board members.

The Chair initiated introductions of the ASO staff that had joined the meeting. They each introduced themselves and announced their job descriptions to the Board members.

The Board members and guests were also introduced.

Revisions to the Agenda – Chair

The Chair asked if there were revisions to the agenda, there were none

Approval of the December 8th, 2022, Minutes, Motion #23-01

Cammy Hart-Anderson moved the motion for approval, Cindy Wolf seconded, all in favor, motion #23-01 carried

Auditor's Report/Presentation

- Deena Garza
- Jordan Helms

https://www.nsbhaso.org/who-we-are/boards-and-committees/board-of-directors/Auditor's%20Report.NSBHESO_FY201_Exit.pdf

Jordan Helms and Deena Garza gave the ASO's Audit report via a PowerPoint presentation and answered questions from Board members

Diversity, Racial Equity, and Inclusion (DREI)

- Michelle Osborne, Nora Karena, Toni Belcher

Michelle Osborne gave a brief PowerPoint to the Board members regarding the ASO's past year of work on diversity, racial equity, and inclusion. Michelle answered questions from members

Behavioral Health Needs Assessment Update: Percival 2:15 p.m.

- Ryan Stattenfield, Sam Sears, Alyssa Kenney

<https://www.nsbhaso.org/news-and-events/north-sound-bhaso-assessment/North%20Sound%20BH-ASO%20Assessment.pdf>

Ryan Stattenfield gave a presentation on the Behavioral Health Needs Assessment that Percival performed for the North Sound region. A question-and-answer session followed, as well as the next steps that will take place which will include the North Sound County Coordinators and Advisory Board participants

Comments & Announcements from the Chair

There were no comments or announcements from the Chair

Reports from Members

Members gave updates on the behavioral health happenings in their respective counties

Comments from the Public

There were no comments from the public

Report from the Advisory Board

Pat O'Maley Lanphear, Advisory Board Chair, gave the report from the Advisory Board which included the current open seats on the Advisory Board

Report from the Finance Officer

Joe Valentine and Darrell Heiner gave the report from the Finance Officer and answered questions

Report from the Governance Operations Committee

The Chair noted that the G&O Committee spoke about the Chair and Vice Chair openings for 2023. He added that nominations are being taken. He nominated himself for chair and Barry Buchanan nominated himself for the role of Vice Chair.

No nominations were received during the meeting, and the Chair added that nominations could be emailed to the Clerk of the Board, as a vote will take place during the February meeting.

All matters listed with the Consent Agenda have been distributed to each Member for reading and study, are considered to be routine, and will be enacted by one action of the Board of Directors with no separate discussion. If separate discussion is desired, the item may be removed from the Consent Agenda and placed on the Regular Agenda by request of a member.

Consent Agenda

Motion #23-02

- To review and approve the North Sound Behavioral Health Administrative Services Organization claims paid from December 1st, 2022, through December 31st, in the amount of **\$1,826,305.51**.
- Payroll for the month of December in the amount of **\$170,545.14** and associated employer benefits in the amount of **\$72,969.37**.

Cammy Hart-Anderson moved the motion for approval, Nicole Gorle seconded, all were in favor, motion #23-02 carried

Action Items

For Board Approval

Health Care Authority (HCA)

Summary

Projects for Assistance in Transition from Homelessness (PATH)

- This is a renewal of the PATH contract, it is on the federal fiscal cycle, September through September. The program is in Snohomish County administered by Bridgeways.
- The second contract is the Bridgeways contract for PATH services.

Motion #23-04

- HCA-North Sound BH-ASO-PATH-K6319 for the provision of PATH services in Snohomish County. The annual amount for this contract is \$219,026 with a term of September 23, 2022, through September 29, 2023.

Motion #23-05

- North Sound BH-ASO-Bridgeways-PATH-22-23 for the provision of PATH services in Snohomish County. The annual amount for this contract is \$219,026 with a term of September 29, 2022, through September 30, 2023.

Cindy Wolf moved motions #23-04 and #23-05 for approval, Perry Mowery seconded. All were in favor, motions #23-04 and #23-05 carried

Peer Path Finder Homeless Outreach

Summary

- This is a renewal of the Peer Path Finder contract, it is on the federal fiscal cycle, September through September. The program operates in Skagit and Whatcom Counties administered by Lifeline Connections.
- The Lifeline Connections contract was approved in December 2022.

Motion #23-06

- HCA-North Sound BH-ASO-K6453 for the provision of Peer Pathfinder services in Skagit and Whatcom counties. The annual amount is \$117,207 with a term of September 30, 2022, through September 29, 2023.

Cindy Wolf moved the motion for approval, Perry Mowery seconded the motion, all in favor, motion #23-06 carried

North Sound County Authorities Operating Agreement

Summary

- At the Board of Directors direction, we reached out to our Attorney Philip Buri to update Article VII paragraph 7.7 to allow for continued virtual meeting and voting by

Board members or their delegates. This change is in accordance with the Public Meetings Act.

Motion #23-07

- To move the North Sound County Authorities Operating Agreement Amendment to the respective elected Councils and/or Commissions in Island, San Juan, Skagit, Snohomish, and Whatcom Counties for approval.

Cammy Hart-Anderson moved the motion for approval, Cindy Wolf seconded the motion, all were favor, motion #23-07 carried

Report from the Executive Director

Joe Valentine referenced the Executive Directors Report and attachments that were included in board members packets.

The topics included:

- GOVERNOR INSLEE'S 2023-2025 RECOMMENDED BUDGET – BEHAVIORAL HEALTH
- WORKFORCE TRAINING AND EDUCATION BOARD: BEHAVIORAL HEALTH WORKFORCE 2022 REPORT
- NORTH SOUND BEHAVIORAL HEALTH NEEDS ASSESSMENT
- LEGISLATIVE UPDATE
- UPDATE ON HOMELESS OUTREACH STABILIZATION TEAM [HOST]
- CRISIS SERVICES UPDATE
- NEW NORTH SOUND BH-ASO STAFF PERSON: ASSISTED OUTPATIENT TREATMENT COORDINATOR
- END OF STATE COVID EMERGENCY ORDER

Adjourn: 3:04 p.m.

Next Meeting: February 9th, 2023

North Sound BH ASO Executive Director's Report

February 7, 2023

1. LEGISLATIVE UPDATE

Bills being watched:

Bill	Title	Status
HB 1134	Implementation of the 988 behavioral health crisis response system	House Health Care & Wellness – February 3 Executive Session
SB 5120	23-hour crisis relief centers	Senate Committee on Health & Long Term Care – Passed January 26- referred to Ways & Means
SB 5130	Assisted Outpatient Treatment	Passed to Senate Rules Committee on January 20
HTM House Bill 1515	Contracting and procurement requirements for behavioral health services in medical assistance programs [including network adequacy]	House Health Care and Wellness – public hearing - February 3

- **HB 1515** includes detailed requirements to be included in the next procurement for MCOs – including requirements for network adequacy. Jill Johnson is one of the county commissioners who testified in support of the bill.

Legislative Calendar:

- February 17 - Policy committee cutoff - house of origin
- February 24 - Fiscal committee cutoff - house of origin
- March 8 - Floor cutoff - house of origin
- March 29 - Policy committee cutoff - opposite house
- April 4 - Fiscal committee cutoff - opposite house
- April 12 - Floor cutoff - opposite house
- April 23 - Sine Die

2. BEHAVIORAL HEALTH SERVICES COORDINATING COUNCIL

- The Behavioral Health Services Coordinating Council [BHSCC] created two sub-groups to develop recommendations on how to improve network adequacy and access to care.
- One group is working on recommendations on how to “measure” improved access to care, e.g., appointment wait times.
- The other group is looking at how apply state quality improvement efforts to complement efforts to reduce wait time and improve access to care.

- The **BHSCC Network Adequacy Workgroup** is developing a sub-group to identify the data that is available measuring timely access to treatment. They will reach out to providers for input.
- The Network Adequacy Workgroup will also be gathering information on the parts of the state that have the most critical gaps in access to services.
- The **full BHSCC** held its quarterly meeting on January 30 and received a presentation on the state’s new marketing campaign to encourage more persons to pursue careers as behavioral health professionals. As part of this campaign, the state had developed a career marketing “toolkit” that any of us can use to help promote careers in behavioral health. This can be found at: [Explore your behavioral health career opportunities today. \(startyourpath.org\)](https://startyourpath.org)

3. NORTH SOUND BEHAVIORAL HEALTH NEEDS ASSESSMENT

- The North Sound Behavioral Health Needs Assessment was reviewed by the county coordinators and representative of the Advisory Board on February 3 to develop recommendations for the Board of Directors on next steps.
- Some of the initial themes from this discussion were:
 - In order to address “capacity” you also have to consider the actual availability of inpatient beds or services – this relates to the “network adequacy” discussions.
 - The need for more supportive housing is just as critical as the need for services – advocacy efforts need to consider both.
 - While its useful to project the need for beds and services in the future, we first have to address current gaps in capacity.
 - In order to develop more accurate need projections, we need to advocate with the state to share some type of utilization data from the Medicaid data base.
- The links to the full report and the Executive Summary can be found at: [North Sound BH-ASO Assessment | North Sound BH-ASO \(nsbhaso.org\)](https://nsbhaso.org)

4. APPLE HEALTH REDETERMINATIONS

- Beginning April 1, HCA will begin mailing redetermination [renewal] notices to Apple Health recipients with a May renewal date. Approximately 60,00 Apple Health recipients will be required to renew their eligibility. HCA estimated that a10-15% will lose coverage, or 6,000 to 9,000 members. Redeterminations will happen in first 3 months.
- Some of the main reasons people may lose coverage include the fact they are no longer eligible for Medicaid or have moved and not provided their new address. For others, they became eligible for Medicaid during the public health emergency and have never had to fill out forms to continue their eligibility. They may disregard the redetermination letters.

5. CRISIS SERVICES UPDATE

- The Weekly Crisis Capacity Indicator snapshot through is attached [**Attachment 1**].

6. MODIFICATION TO INTERLOCAL AGREEMENT TO ALLOW USE OF HYBRID MEETINGS

- The modification approved by the Board of Directors on January 12 to the BH-ASO North Sound Interlocal agreement allowing for the use of a “hybrid” model for Board meetings has been sent to the county prosecuting attorneys for review and forwarding to their county elected officials.

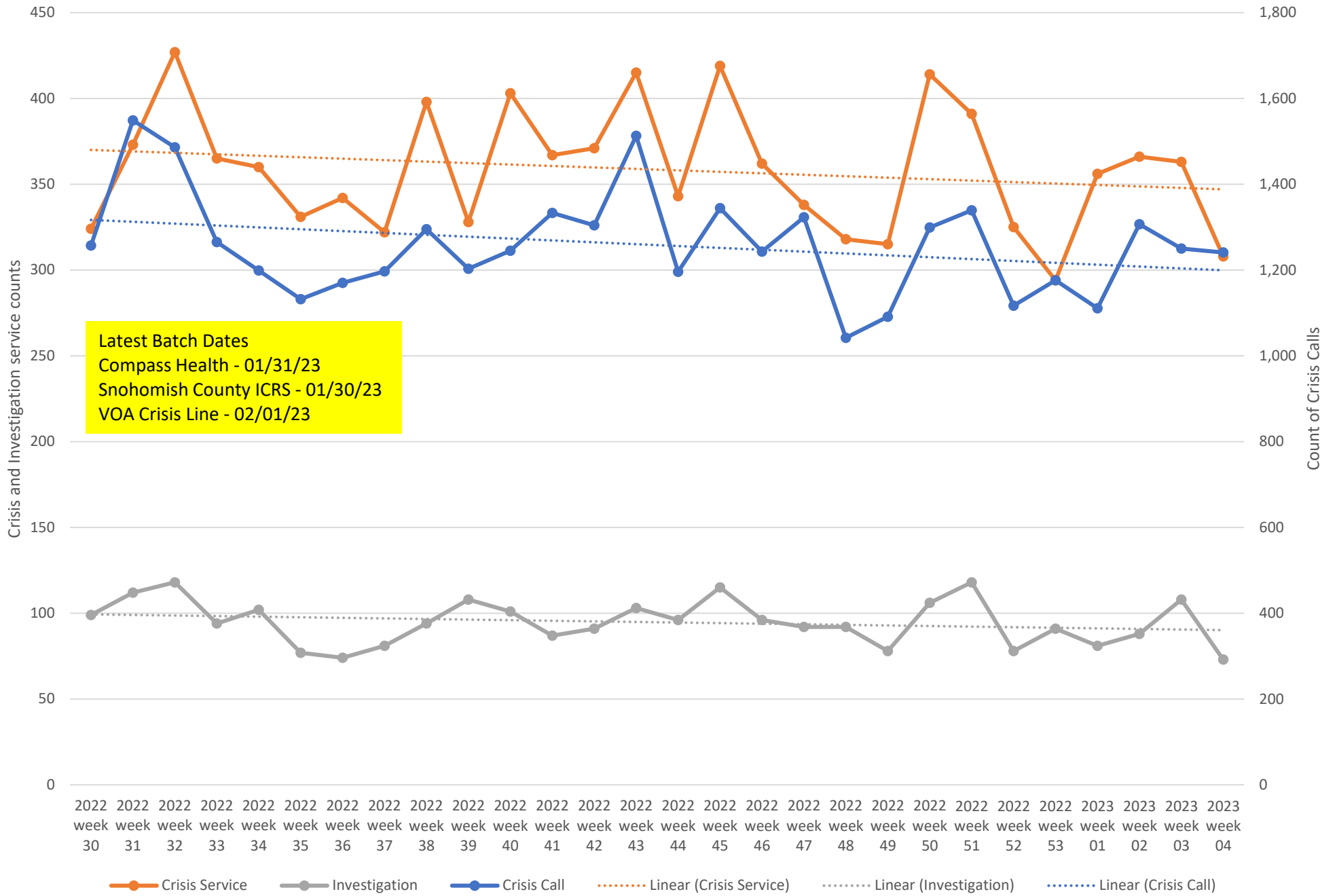
DRAFT



Weekly Crisis Capacity Indicator Snapshot

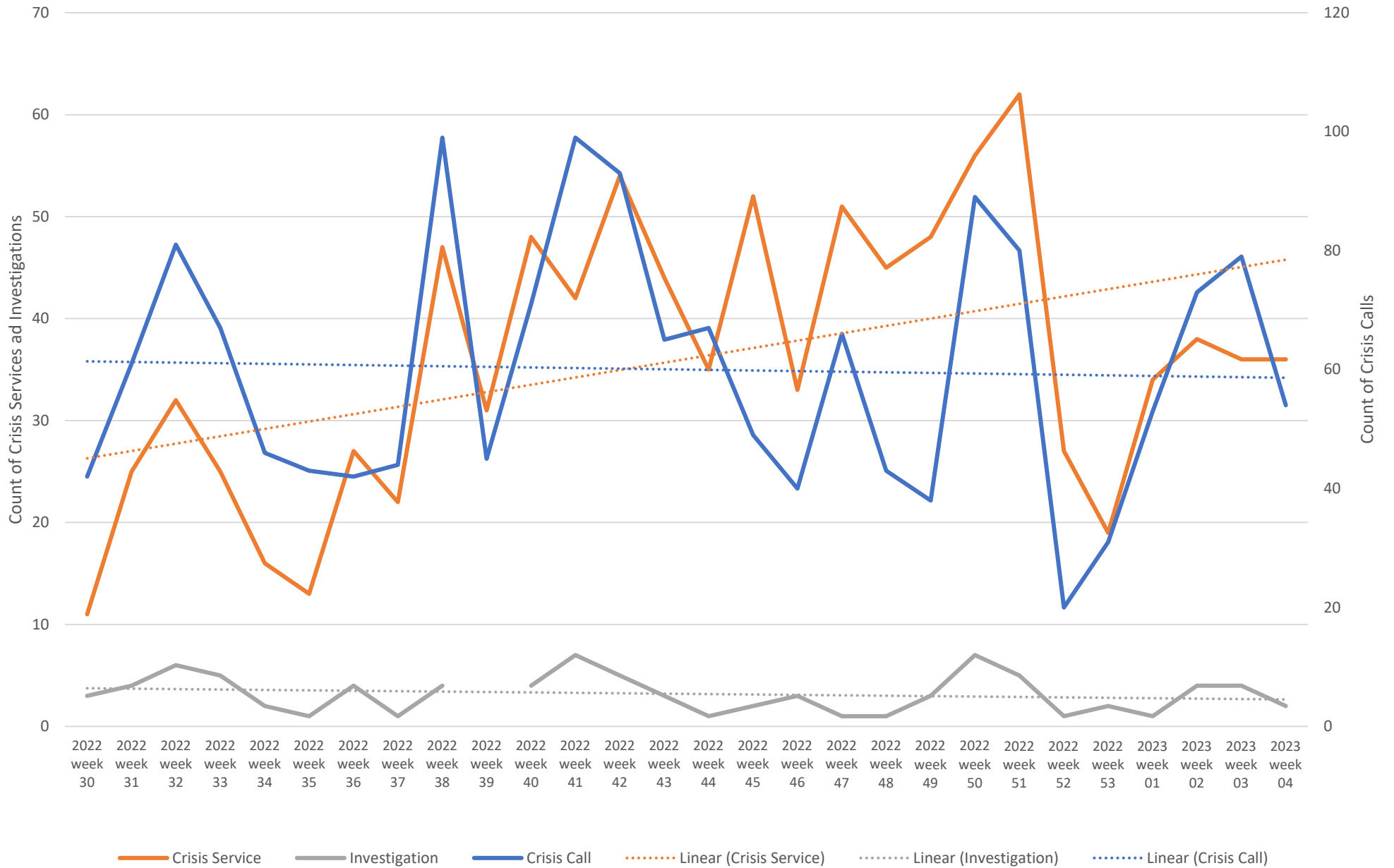
Page 2	Crisis Data - dates 07/17/22 to 01/28/23
Page 3	Crisis Data: Ages 0-17 - dates 07/17/22 to 01/28/23
Page 4	All DCR Dispatches - dates 07/17/22 to 01/28/23
Page 5	Weekly Staff Count - Staff providing Crisis or Investigation services 07/17/22 to 01/28/23
Page 6	Hospital placement locations (Invol and Vol) - No adjustment has been made for timely data - recent weeks likely low
Page 7	Telehealth only, crisis and investigation services from 07/17/22 to 01/28/23
Page 8	Crisis Service Unit Percent - Crisis Service units divided by Crisis units + Investigation units
Page 9	Washington State Indicators of Anxiety or Depression Based on Reported Frequency of Symptoms During Last 7 Days
Page 10	Place of Service -Crisis Services, percent of total by week
Page 11	Place of Service -Investigations, percent of total by week
Page 12	New COVID-19 Cases Reported Weekly per 100,000 population - 03/16/22 to 02/02/23
Page 13	New COVID-19 Deaths Reported Weekly per 1,000,000 population - 03/16/22 to 02/02/23
Page 14	Total Hospitalized Adults - COVID-19 (confirmed or suspected) 7 day average
Page 15	North Sound BH ASO Walkaway Chart 07/17/22 to 01/28/23

Crisis Data - dates 07/17/22 to 01/28/23

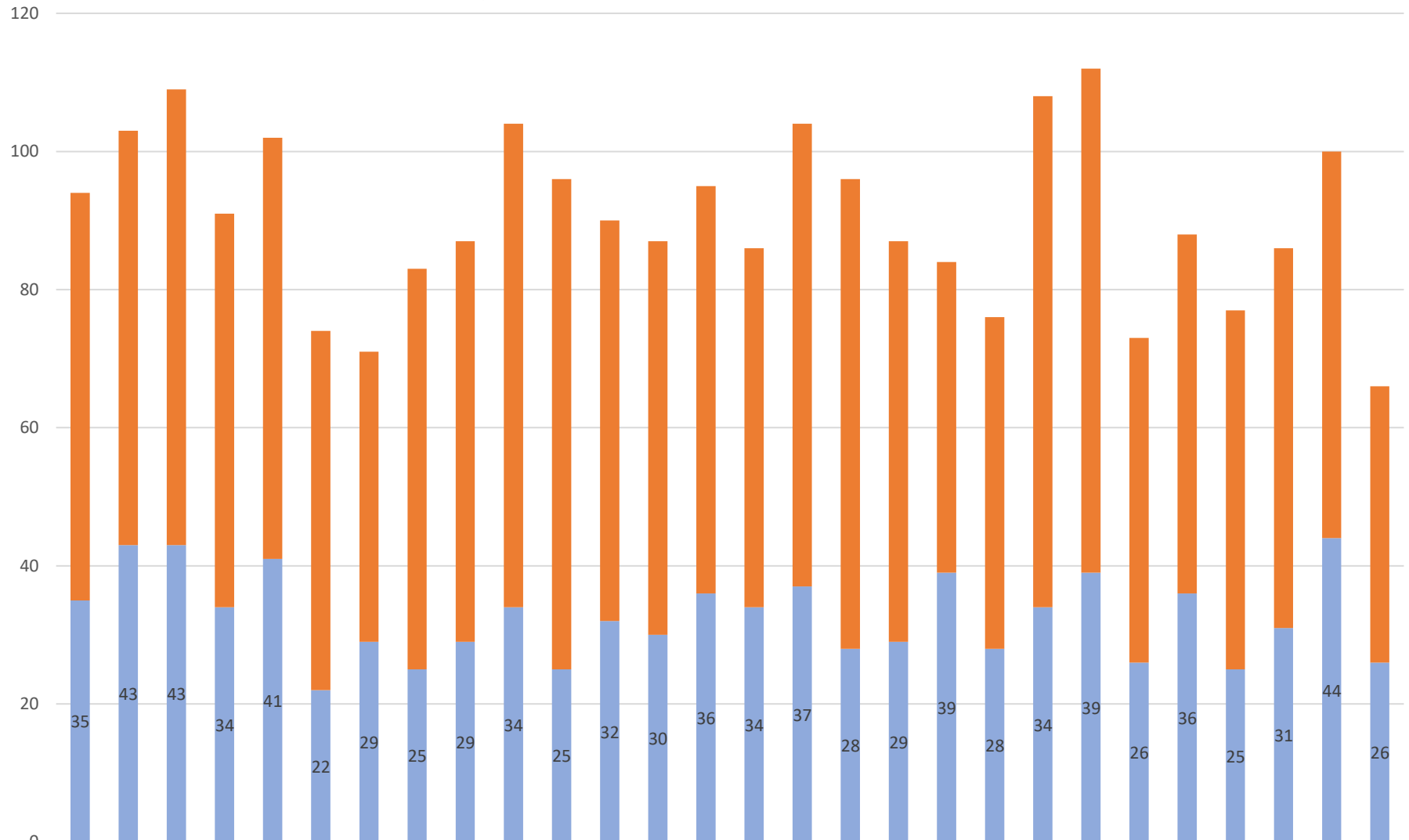


Latest Batch Dates
 Compass Health - 01/31/23
 Snohomish County ICRS - 01/30/23
 VOA Crisis Line - 02/01/23

Crisis Data: Ages 0-17 - dates 07/17/22 to 01/28/23

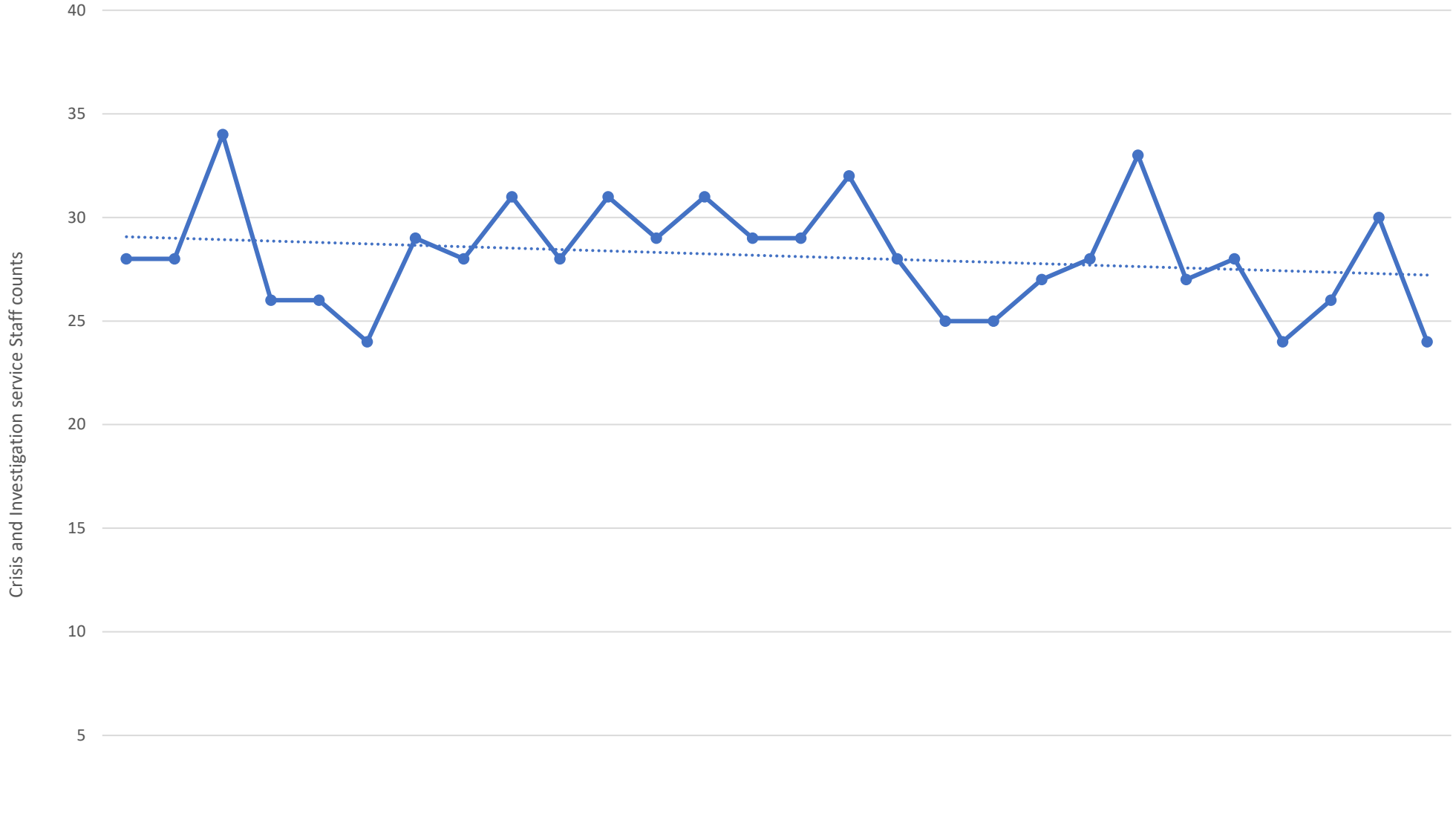


All DCR Dispatches - dates 07/17/22 to 01/28/23



dispatch resulting in other outcome	59	60	66	57	61	52	42	58	58	70	71	58	57	59	52	67	68	58	45	48	74	73	47	52	52	55	56	40
dispatch resulting in detention	35	43	43	34	41	22	29	25	29	34	25	32	30	36	34	37	28	29	39	28	34	39	26	36	25	31	44	26

Weekly Staff Count - Staff providing Crisis or Investigation services 07/17/22 to 01/28/23

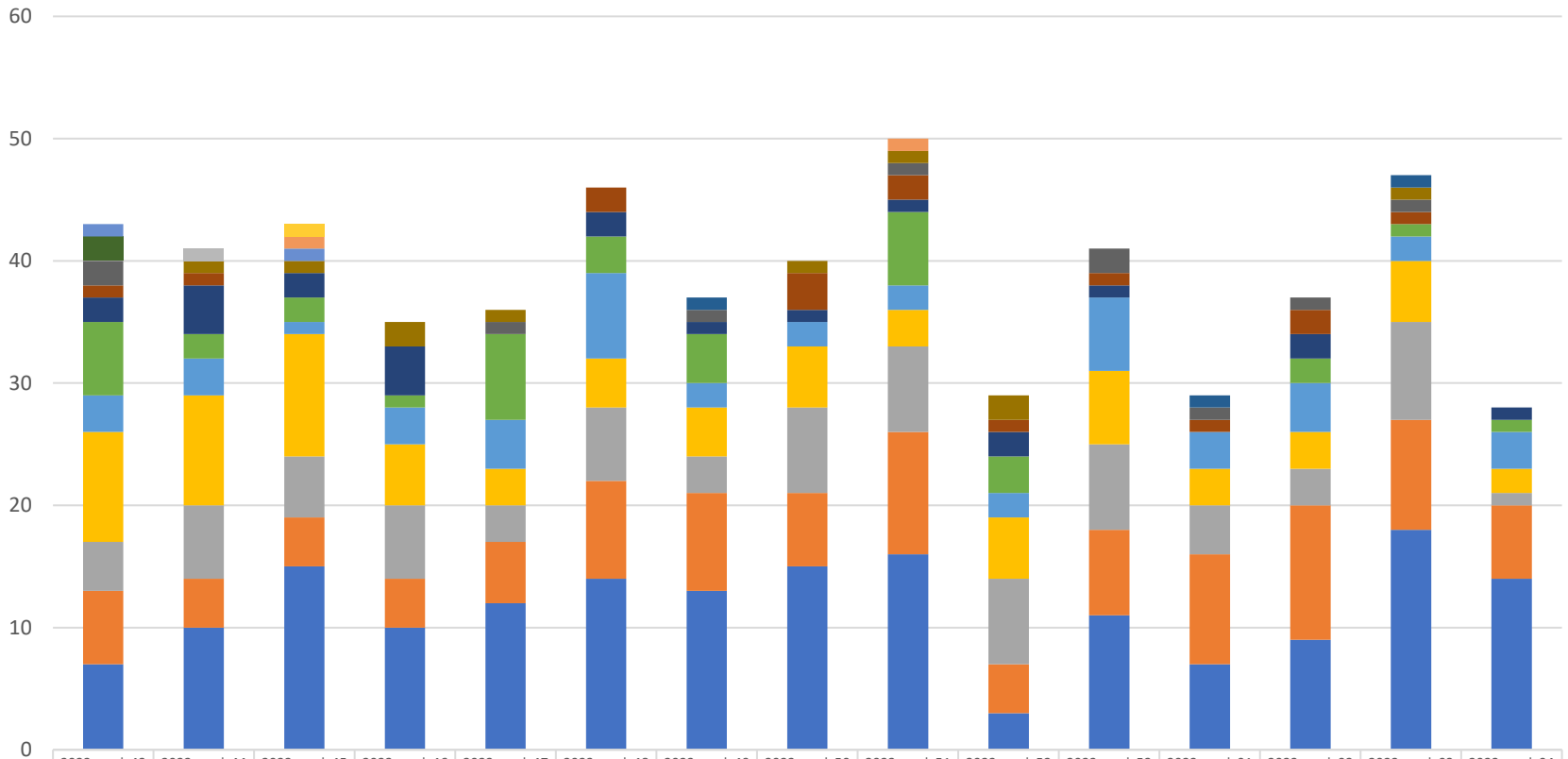


	2022 week 30	2022 week 31	2022 week 32	2022 week 33	2022 week 34	2022 week 35	2022 week 36	2022 week 37	2022 week 38	2022 week 39	2022 week 40	2022 week 41	2022 week 42	2022 week 43	2022 week 44	2022 week 45	2022 week 46	2022 week 47	2022 week 48	2022 week 49	2022 week 50	2022 week 51	2022 week 52	2022 week 53	2023 week 01	2023 week 02	2023 week 03	2023 week 04
● Total	28	28	34	26	26	24	29	28	31	28	31	29	31	29	29	32	28	25	25	27	28	33	27	28	24	26	30	24

2023 week 04 ending 01/00/00

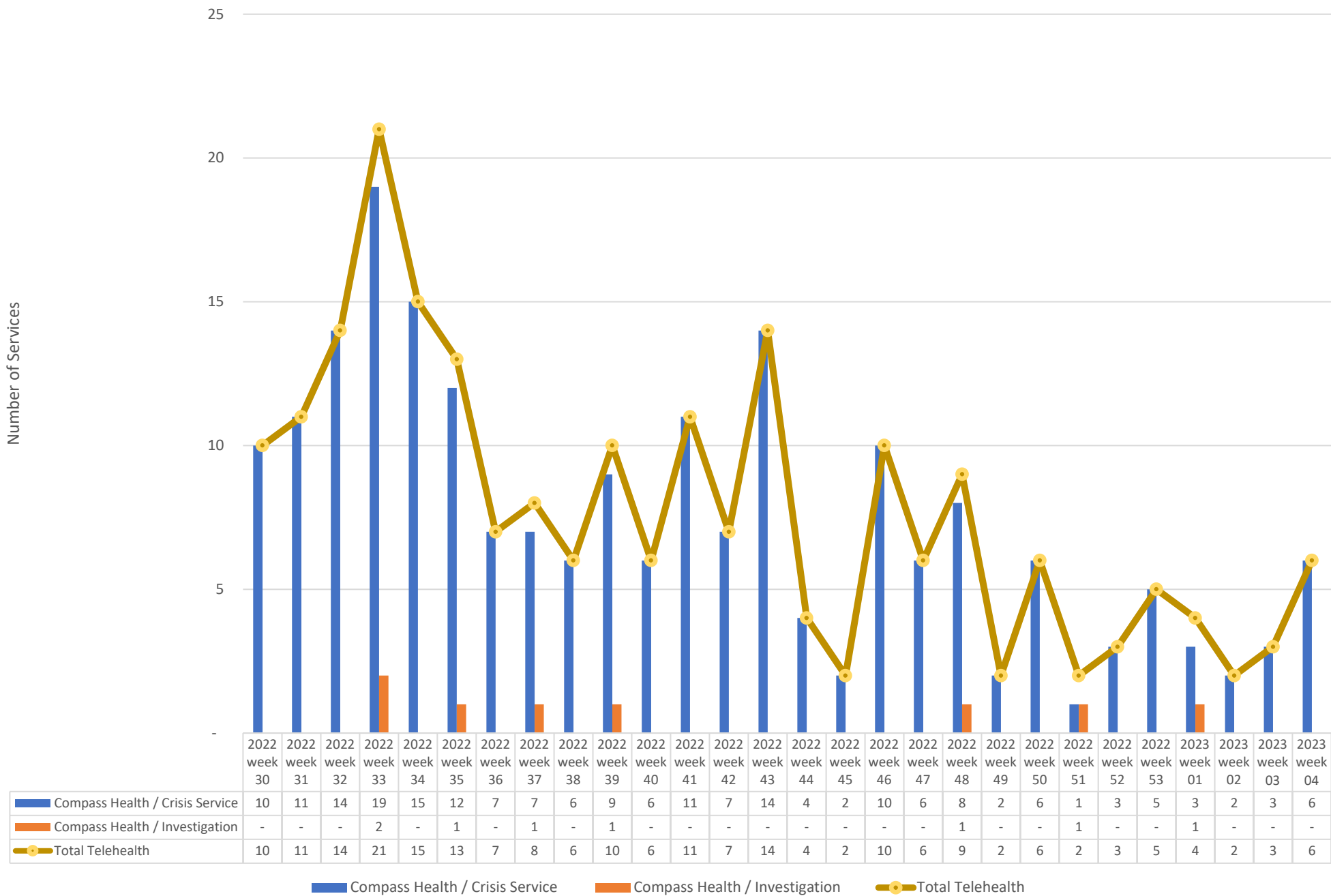
Hospital placement locations (Invol and Vol) - No adjustment has been made for timely data - recent weeks likely low

Count of hospital placement locations in the dispatch record

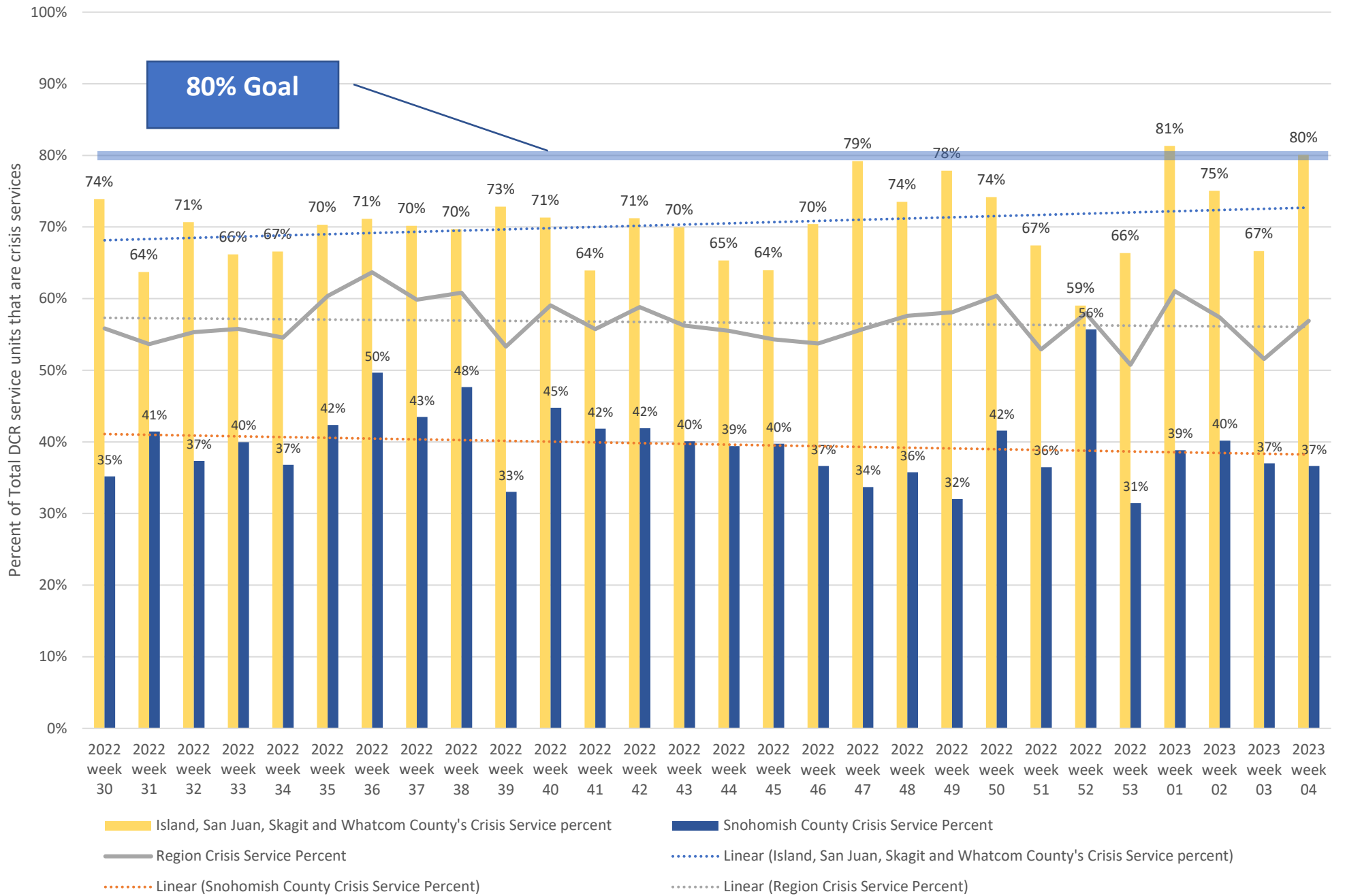


	2022 week 43	2022 week 44	2022 week 45	2022 week 46	2022 week 47	2022 week 48	2022 week 49	2022 week 50	2022 week 51	2022 week 52	2022 week 53	2023 week 01	2023 week 02	2023 week 03	2023 week 04
South Sound Vest Thurston			1												
Tacoma General		1													
THURSTON/MASON EandT FACILITY			1						1						
Swedish Mill Creek	1		1												
Western State	2														
Valley Cities Counseling And Consultation							1					1		1	
ABHS Chehalis		1	1	2	1			1	1	2				1	
VALLEY GENERAL HOSPITAL	2				1		1		1		2	1	1	1	
Telecare North Sound Evaluation and Treatment	1	1				2		3	2	1	1	1	2	1	
Mukilteo	2	4	2	4		2	1	1	1	2	1		2		1
BHC Fairfax Hospital INC	6	2	2	1	7	3	4		6	3			2	1	1
SMOKEY POINT BEHAVIORAL HOSPITAL	3	3	1	3	4	7	2	2	2	2	6	3	4	2	3
Peacehealth Bellingham	9	9	10	5	3	4	4	5	3	5	6	3	3	5	2
Skagit Valley Hospital	4	6	5	6	3	6	3	7	7	7	7	4	3	8	1
SWEDISH EDMONDS	6	4	4	4	5	8	8	6	10	4	7	9	11	9	6
Providence Everett	7	10	15	10	12	14	13	15	16	3	11	7	9	18	14

Telehealth only, crisis and investigation services from 07/17/22 to 01/28/23



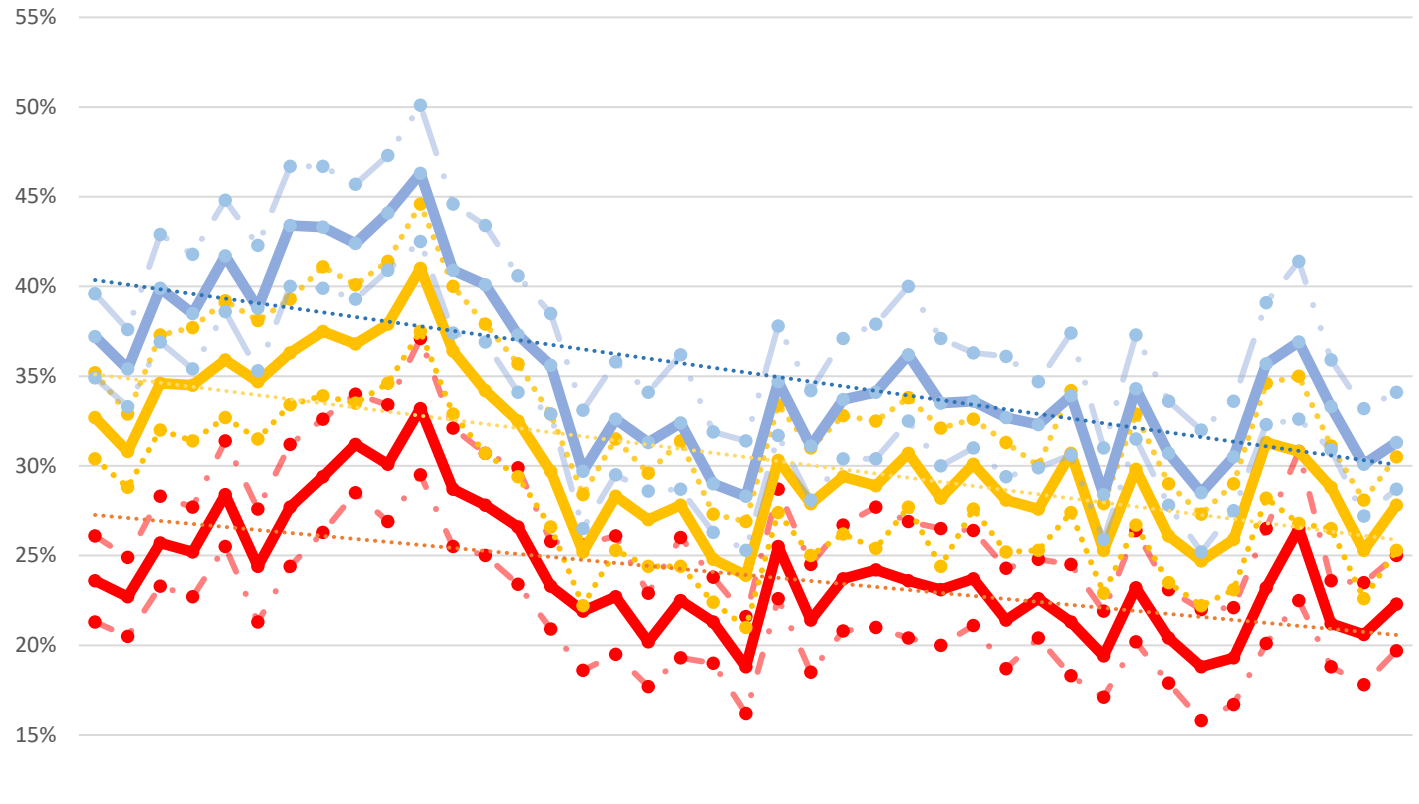
Crisis Service Unit Percent - Crisis Service units divided by Crisis units + Investigation units



Washington State Indicators of Anxiety or Depression Based on Reported Frequency of Symptoms During Last 7 Days

The U.S. Census Bureau, in collaboration with five federal agencies, launched the Household Pulse Survey to produce data on the social and economic impacts of Covid-19 on American households. The Household Pulse Survey was designed to gauge the impact of the pandemic on employment status, consumer spending, food security, housing, education disruptions, and dimensions of physical and mental wellness.

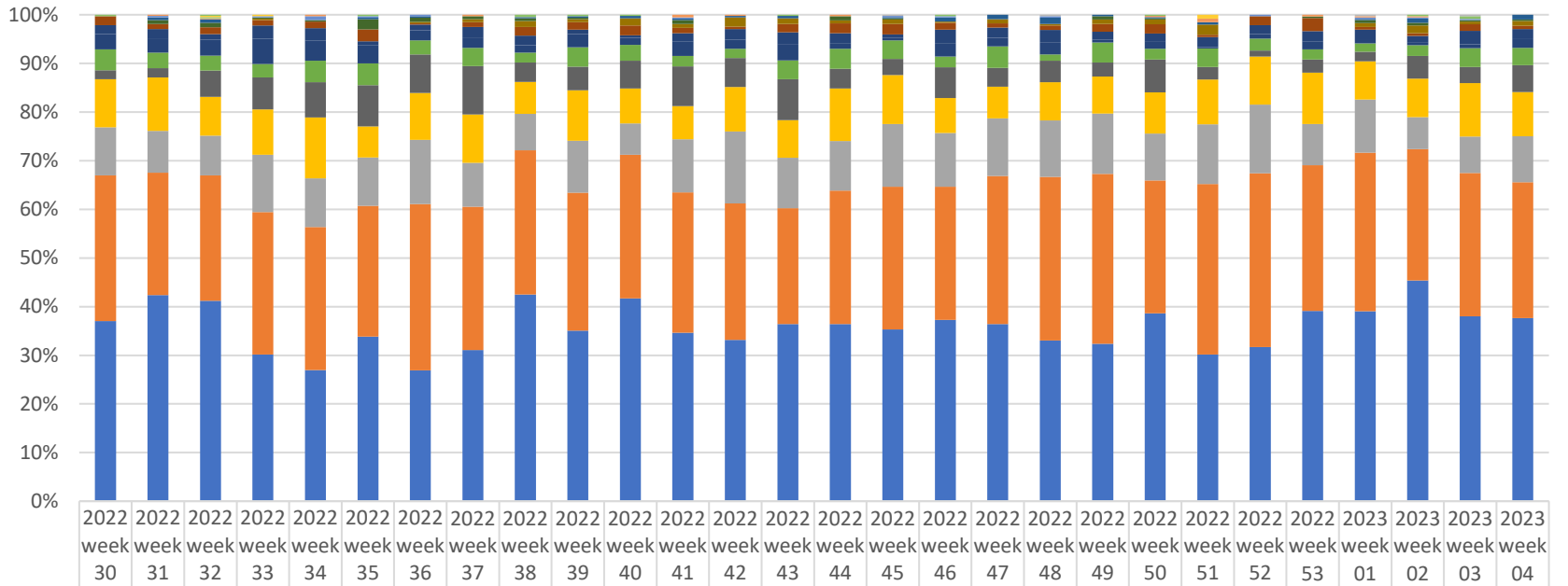
<https://data.cdc.gov/NCHS/Indicators-of-Anxiety-or-Depression-Based-on-Reported-Frequency-of-Symptoms-During-Last-7-Days>



19 Aug '20	02 Sep '20	16 Sep '20	30 Sep '20	14 Oct '20	28 Oct '20	11 Nov '20	25 Nov '20	09 Dec '20	06 Jan '21	20 Jan '21	03 Feb '21	17 Feb '21	03 Mar '21	17 Mar '21	14 Apr '21	28 Apr '21	12 May '21	26 May '21	09 Jun '21	23 Jun '21	21 Jul '21	04 Aug '21	18 Aug '21	01 Sep '21	15 Sep '21	29 Sep '21	01 Oct '21	29 Oct '21	26 Nov '21	02 Dec '21	30 Dec '21	27 Jan '22	01 Feb '22	29 Feb '22	27 Mar '22	01 Apr '22	29 Apr '22	27 May '22	24 Jun '22	22 Jul '22	19 Aug '22	17 Sep '22	14 Oct '22	05 Nov '22	02 Dec '22	09 Jan '23	04 Jan '23
------------	------------	------------	------------	------------	------------	------------	------------	------------	------------	------------	------------	------------	------------	------------	------------	------------	------------	------------	------------	------------	------------	------------	------------	------------	------------	------------	------------	------------	------------	------------	------------	------------	------------	------------	------------	------------	------------	------------	------------	------------	------------	------------	------------	------------	------------	------------	------------

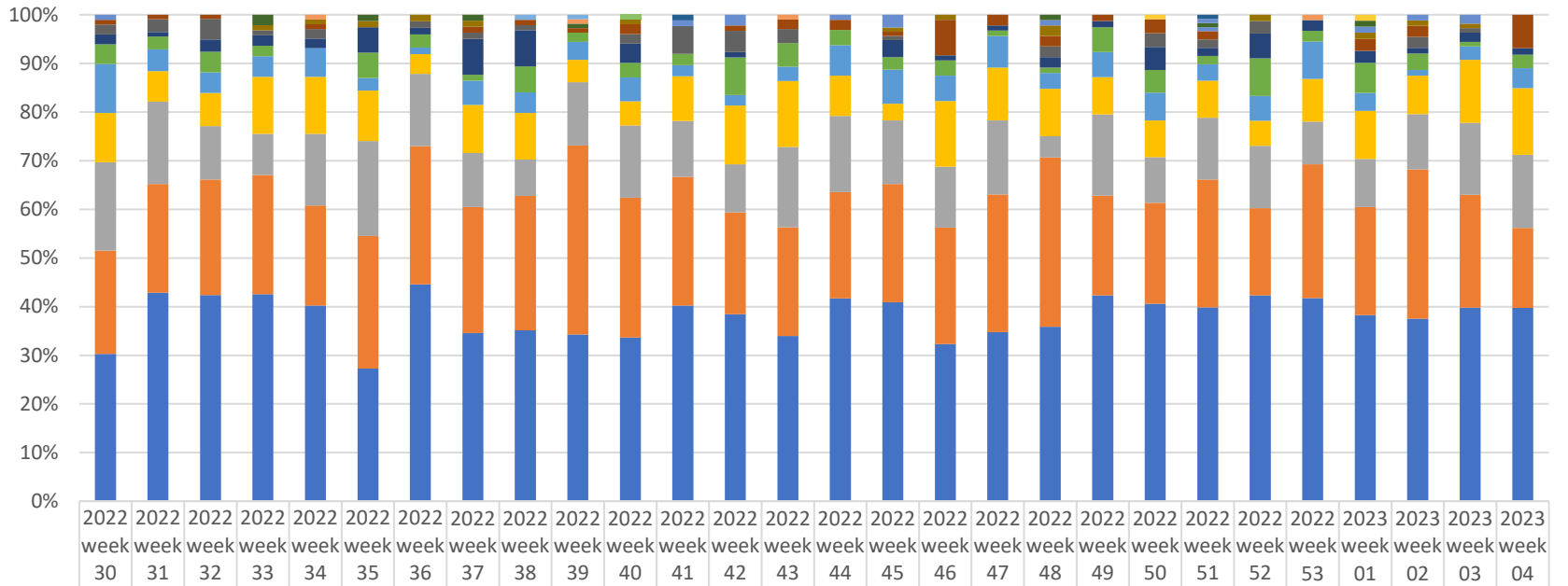
● % with Symptoms of Depressive Disorder low conf. level	21%	21%	23%	23%	26%	21%	24%	26%	29%	27%	30%	26%	25%	23%	21%	19%	20%	18%	19%	19%	16%	23%	19%	21%	21%	20%	20%	21%	19%	20%	18%	17%	20%	18%	16%	17%	20%	18%	16%	17%	20%	23%	19%	18%	20%		
● % with Symptoms of Depressive Disorder value	24%	23%	26%	25%	28%	24%	28%	29%	31%	30%	33%	29%	28%	27%	23%	22%	23%	20%	23%	21%	19%	26%	21%	24%	24%	24%	23%	24%	21%	23%	21%	19%	23%	20%	19%	19%	23%	22%	22%	27%	31%	24%	21%	22%			
● % with Symptoms of Depressive Disorder high conf. level	26%	25%	28%	28%	31%	28%	31%	33%	34%	33%	37%	32%	31%	30%	26%	26%	26%	23%	26%	24%	22%	21%	27%	25%	27%	28%	27%	27%	26%	24%	25%	25%	22%	26%	23%	22%	22%	23%	28%	27%	31%	24%	24%	25%			
● % with Symptoms of Anxiety Disorder low conf. level	30%	29%	32%	31%	33%	32%	33%	34%	34%	35%	38%	33%	31%	29%	27%	22%	25%	24%	24%	22%	21%	27%	25%	26%	25%	28%	24%	28%	25%	25%	27%	23%	27%	30%	28%	28%	31%	25%	30%	26%	25%	26%	31%	31%	29%	25%	28%
● % with Symptoms of Anxiety Disorder value	33%	31%	35%	35%	36%	35%	36%	38%	37%	38%	41%	36%	34%	33%	30%	25%	28%	27%	28%	25%	24%	30%	28%	29%	29%	31%	28%	30%	28%	28%	31%	25%	30%	26%	25%	26%	31%	31%	29%	35%	35%	31%	28%	31%	28%		
● % with Symptoms of Anxiety Disorder high conf. level	35%	33%	37%	35%	39%	38%	39%	41%	40%	41%	45%	40%	38%	36%	33%	28%	32%	30%	31%	27%	27%	33%	31%	33%	33%	34%	32%	33%	31%	30%	34%	28%	33%	29%	27%	29%	35%	35%	31%	28%	31%	27%	29%	31%	28%		
● % with Symptoms of Anxiety or Depressive Disorder low conf. level	35%	33%	37%	35%	39%	35%	40%	40%	39%	41%	43%	37%	37%	34%	33%	27%	30%	29%	29%	26%	25%	32%	28%	30%	30%	33%	30%	31%	29%	30%	31%	26%	32%	28%	25%	28%	31%	29%	31%	36%	37%	33%	30%	31%	27%	29%	
● % with Symptoms of Anxiety or Depressive Disorder value	37%	35%	40%	39%	42%	39%	43%	43%	42%	44%	46%	41%	40%	37%	36%	30%	33%	31%	32%	29%	28%	35%	31%	34%	34%	36%	34%	34%	33%	32%	34%	28%	34%	31%	29%	31%	36%	37%	33%	30%	31%	27%	29%	31%	28%	31%	28%
● % with Symptoms of Anxiety or Depressive Disorder high conf. level	40%	38%	43%	42%	45%	42%	47%	47%	46%	47%	50%	45%	43%	41%	39%	33%	36%	34%	36%	32%	31%	38%	34%	37%	38%	40%	37%	36%	36%	35%	37%	31%	37%	34%	32%	34%	39%	41%	36%	33%	34%	30%	31%	28%	31%	28%	

Place of Service -Crisis Services, percent of total by week



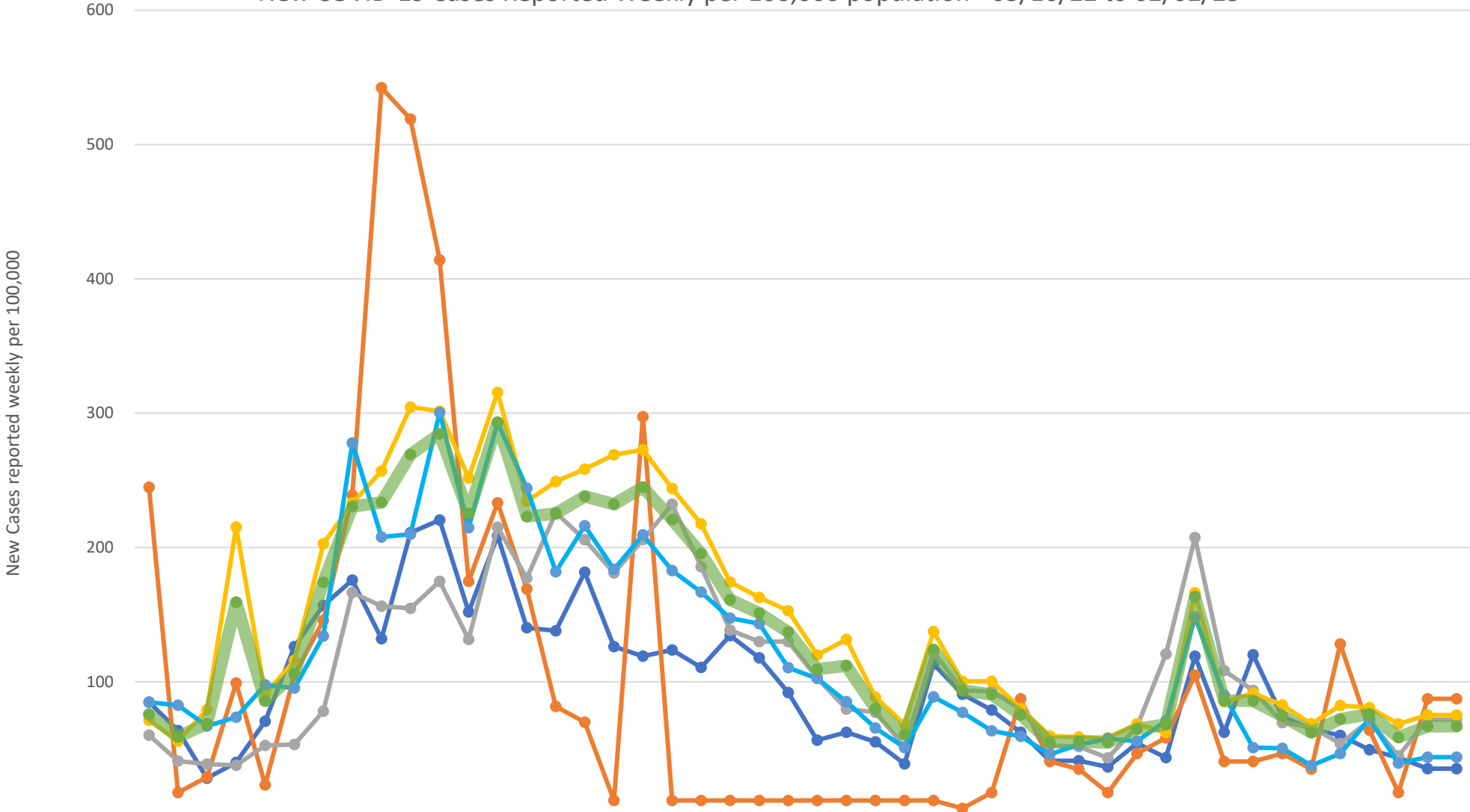
	2022 week 30	2022 week 31	2022 week 32	2022 week 33	2022 week 34	2022 week 35	2022 week 36	2022 week 37	2022 week 38	2022 week 39	2022 week 40	2022 week 41	2022 week 42	2022 week 43	2022 week 44	2022 week 45	2022 week 46	2022 week 47	2022 week 48	2022 week 49	2022 week 50	2022 week 51	2022 week 52	2022 week 53	2023 week 01	2023 week 02	2023 week 03	2023 week 04
Custodial Care Facility	1		1						1	1																		
Community Mental Health Center															1			1							1		1	
Skilled Nursing Facility			1	1																		3						
On Campus Outpatient Hospital			1			1			1	1				1			1				1					1	2	
Nursing Facility		1	1		1			1				2	1		1						1	3		1	1	1		
Psych. Residential		1		1	3	1	1					1				1	1		1				1		1	1	1	
Group Home		2	3			1	1		1	1	2	1	1	2		1	3	3	4	1	1	2			1	3		3
Homeless Shelter		3	4	1	1	7	3	2	2	1		3			3	1				2	1			1	2	2	1	1
School				1			1	2	5	2	6	3	7	5	2	4	1	3	1	3	4	8			3	6	2	3
Inpatient Hospital	6	4	6	4	5	8	1	3	7	5	8	4	2	7	7	9	5	3	3	5	8	2	6	8	2	2	5	2
Inpatient Psychiatric Facility	6	7	5	10	9	3	4	7	8	3	2	6	8	10	7	3	10	7	8	5	7	8	6	6	7	5	10	6
Telehealth	10	11	14	19	15	12	7	7	6	9	6	11	7	14	4	2	10	6	8	2	6	1	3	5	3	2	3	6
Prison Correctional Facility	14	12	13	10	16	15	10	12	8	13	13	8	7	16	14	16	8	15	4	13	9	15	8	6	6	8	14	11
Assisted Living Facility	6	7	23	24	26	28	27	32	16	16	23	30	22	35	14	14	23	13	14	9	28	10	4	8	7	17	12	17
Emergency Room Hospital	32	41	34	34	45	21	33	32	26	34	29	25	34	32	37	42	26	22	25	24	35	36	32	31	28	29	40	28
Home	32	32	35	43	36	33	45	29	30	35	26	40	55	43	35	54	40	40	37	39	40	48	46	25	39	24	27	29
Other Place of Service	97	94	110	107	106	89	117	95	118	93	119	106	104	99	94	123	99	103	107	110	113	137	116	88	116	99	107	86
Office	120	158	176	110	97	112	92	100	169	115	168	127	123	151	125	148	135	123	105	102	160	118	103	115	139	166	138	116

Place of Service -Investigations, percent of total by week



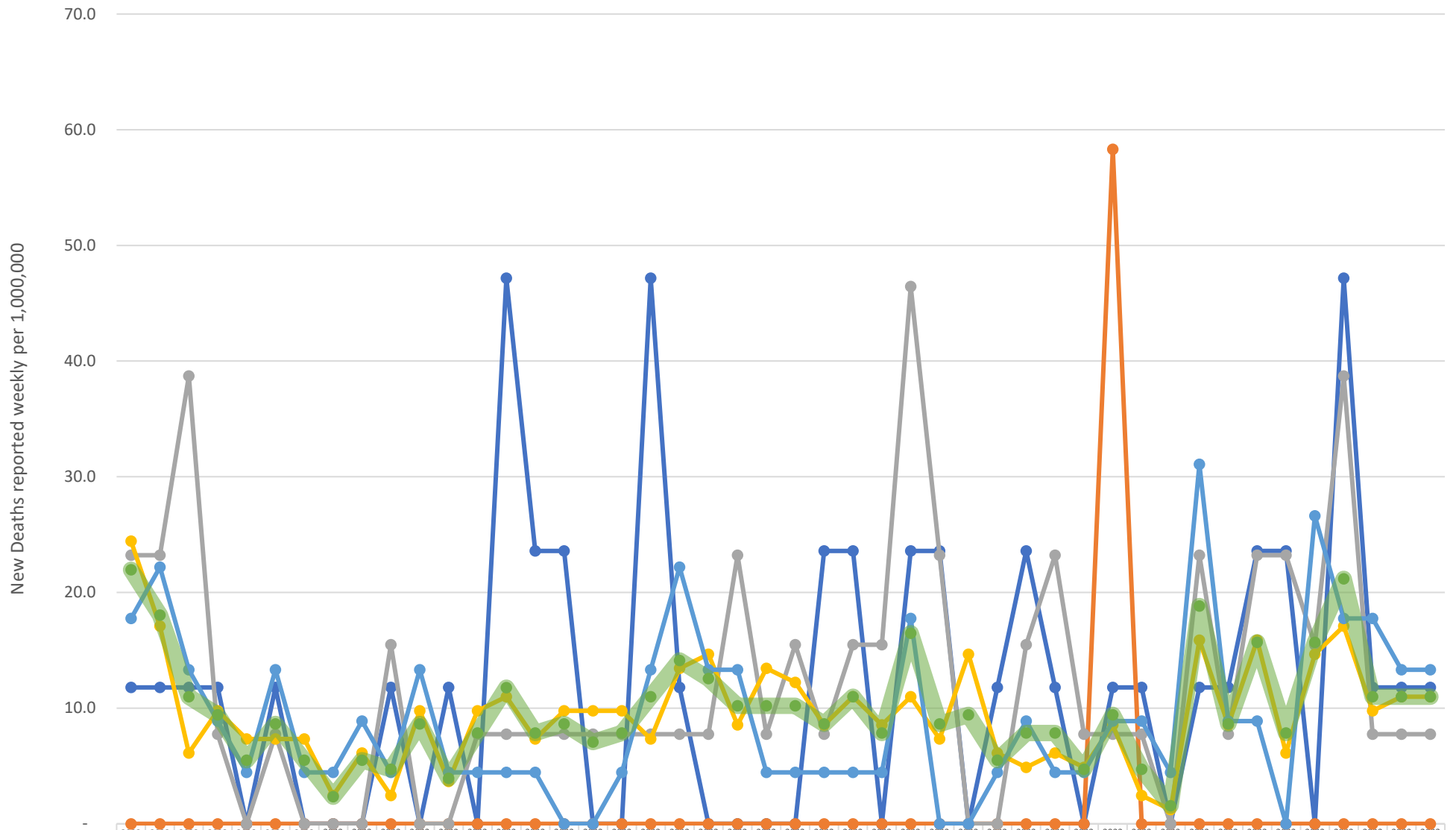
	2022 week 30	2022 week 31	2022 week 32	2022 week 33	2022 week 34	2022 week 35	2022 week 36	2022 week 37	2022 week 38	2022 week 39	2022 week 40	2022 week 41	2022 week 42	2022 week 43	2022 week 44	2022 week 45	2022 week 46	2022 week 47	2022 week 48	2022 week 49	2022 week 50	2022 week 51	2022 week 52	2022 week 53	2023 week 01	2023 week 02	2023 week 03	2023 week 04	
Custodial Care Facility											1																		
On Campus Outpatient Hospital									1	1																			
Nursing Facility																						1				1			
Skilled Nursing Facility												1											1						
Homeless Shelter					1						1			1											1				
School												1	2		1								1				1		
Telehealth				2		1		1			1									1			1			1			
Community Mental Health Center	1															3				1			1			1		2	
Psych. Residential				1	1	1	1	1			1					1	1		2					1		1	1	1	
Group Home	1	1	1		1			1	1	1	2		1	2	2	1	7	2	2	1	3	2				2	2		5
Assisted Living Facility	2	3	5	1	2		1	1	1		2	5	4	3		1			2		3	2	2			2	1		
Home	2	1	3	2	2	4	1	6	7		4		1			4	1	1	2	1	5	2	4	2	2	2	1	2	1
Office	4	3	5	2		4	2	1	5	2	3	2	7	5	3	3	3	1	1	4	5	2	6	2	5	3	1	2	
Inpatient Hospital	10	5	5	4	6	2	1	4	4	4	5	2	2	3	6	8	5	6	3	4	6	4	4	7	3	1	3	3	
Inpatient Psychiatric Facility	10	7	8	11	12	8	3	8	9	5	5	8	11	14	8	4	13	10	9	6	8	9	4	8	8	7	14	10	
Prison Correctional Facility	18	19	13	8	15	15	11	9	7	14	15	10	9	17	15	15	12	14	4	13	10	15	10	8	8	10	16	11	
Other Place of Service	21	25	28	23	21	21	21	21	26	42	29	23	19	23	21	28	23	26	32	16	22	31	14	25	18	27	25	12	
Emergency Room Hospital	30	48	50	40	41	21	33	28	33	37	34	35	35	35	40	47	31	32	33	33	43	47	33	38	31	33	43	29	

New COVID-19 Cases Reported Weekly per 100,000 population - 03/16/22 to 02/02/23



	2022 Week 11	2022 Week 12	2022 Week 13	2022 Week 14	2022 Week 15	2022 Week 16	2022 Week 17	2022 Week 18	2022 Week 19	2022 Week 20	2022 Week 21	2022 Week 22	2022 Week 23	2022 Week 24	2022 Week 25	2022 Week 26	2022 Week 27	2022 Week 28	2022 Week 29	2022 Week 30	2022 Week 31	2022 Week 32	2022 Week 33	2022 Week 34	2022 Week 35	2022 Week 36	2022 Week 37	2022 Week 38	2022 Week 39	2022 Week 40	2022 Week 41	2022 Week 42	2022 Week 43	2022 Week 44	2022 Week 45	2022 Week 46	2022 Week 48	2022 Week 49	2022 Week 50	2022 Week 51	2022 Week 52	2023 Week 01	2023 Week 02	2023 Week 03	2023 Week 04	2023 Week 05
Island	85	64	28	40	71	126	157	176	132	211	220	152	209	140	138	182	126	119	124	111	134	118	92	57	62	55	39	113	91	79	62	41	41	37	54	44	119	62	120	74	65	60	50	44	35	35
San Juan	245	17	29	99	23	105	146	239	542	519	414	175	233	169	82	70	12	297	12	12	12	12	12	12	12	12	12	12	6	17	87	41	35	17	47	58	105	41	41	47	35	128	64	17	87	87
Skagit	60	41	39	38	53	53	78	166	156	155	175	132	215	177	226	206	181	206	232	186	139	130	130	103	80	77	52	122	94	93	80	53	52	43	67	121	207	108	94	70	67	54	71	45	72	72
Snohomish	71	56	79	215	91	116	203	233	257	305	301	252	316	234	249	258	269	273	244	218	174	163	153	120	132	89	68	137	100	100	80	60	59	58	69	62	166	85	92	83	69	82	81	69	75	75
Whatcom	85	83	67	74	98	95	134	278	208	210	300	215	293	244	182	216	184	209	183	167	147	143	111	103	85	66	51	89	77	63	59	46	53	58	56	71	148	90	51	51	38	47	72	40	44	44
Region	76	59	69	159	86	106	174	230	234	269	285	225	293	223	225	238	232	245	221	196	161	151	137	110	112	80	61	124	94	91	75	55	56	55	65	68	163	86	86	75	62	72	76	59	67	67

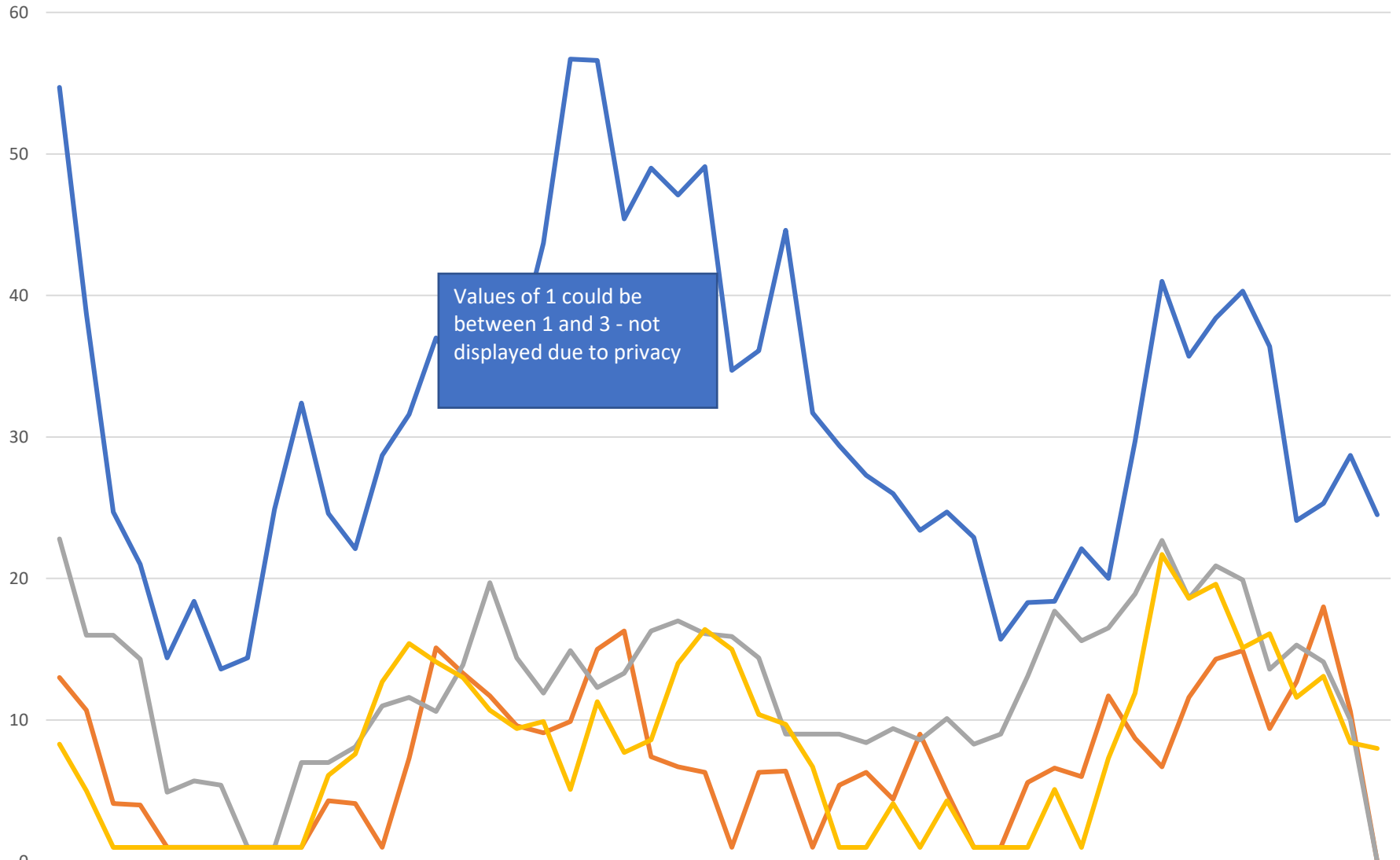
New COVID-19 Deaths Reported Weekly per 1,000,000 population - 03/16/22 to 02/02/23



	2022 Week 11	2022 Week 12	2022 Week 13	2022 Week 14	2022 Week 15	2022 Week 16	2022 Week 17	2022 Week 18	2022 Week 19	2022 Week 20	2022 Week 21	2022 Week 22	2022 Week 23	2022 Week 24	2022 Week 25	2022 Week 26	2022 Week 27	2022 Week 28	2022 Week 29	2022 Week 30	2022 Week 31	2022 Week 32	2022 Week 33	2022 Week 34	2022 Week 35	2022 Week 36	2022 Week 37	2022 Week 38	2022 Week 39	2022 Week 40	2022 Week 41	2022 Week 42	2022 Week 43	2022 Week 44	2022 Week 45	2022 Week 46	2022 Week 48	2022 Week 49	2022 Week 50	2022 Week 51	2022 Week 52	2023 Week 01	2023 Week 02	2023 Week 03	2023 Week 04	2023 Week 05
Island	11.8	11.8	11.8	11.8	-	11.8	-	-	-	11.8	-	11.8	-	47.2	23.6	23.6	-	-	47.2	11.8	-	-	-	-	23.6	23.6	-	23.6	23.6	-	11.8	23.6	11.8	-	11.8	11.8	-	11.8	11.8	23.6	23.6	-	47.2	11.8	11.8	11.8
San Juan	-	-	-	-	-	-	-	-	-	-	-	-	-	-	-	-	-	-	-	-	-	-	-	-	-	-	-	-	-	-	-	-	-	58.3	-	-	-	-	-	-	-	-	-	-	-	
Skagit	23.2	23.2	38.7	7.7	-	7.7	-	-	-	15.5	-	-	7.7	7.7	7.7	7.7	7.7	7.7	7.7	7.7	7.7	23.2	7.7	15.5	7.7	15.5	15.5	46.4	23.2	-	-	15.5	23.2	7.7	7.7	7.7	-	23.2	7.7	23.2	23.2	15.5	38.7	7.7	7.7	7.7
Snohomish	24.4	17.1	6.1	9.8	7.3	7.3	7.3	2.4	6.1	2.4	9.8	3.7	9.8	11.0	7.3	9.8	9.8	9.8	7.3	13.4	14.7	8.6	13.4	12.2	8.6	11.0	8.6	11.0	7.3	14.7	6.1	4.9	6.1	4.9	8.6	2.4	1.2	15.9	8.6	15.9	6.1	14.7	17.1	9.8	11.0	11.0
Whatcom	17.8	22.2	13.3	8.9	4.4	13.3	4.4	4.4	8.9	4.4	13.3	4.4	4.4	4.4	4.4	-	-	4.4	13.3	22.2	13.3	13.3	4.4	4.4	4.4	4.4	4.4	17.8	-	-	4.4	8.9	4.4	4.4	4.4	8.9	4.4	8.9	4.4	8.9	-	26.6	17.8	17.8	13.3	13.3
Region	22.0	18.0	11.0	9.4	5.5	8.6	5.5	2.4	5.5	4.7	8.6	3.9	7.8	11.8	7.8	8.6	7.1	7.8	11.0	14.1	12.5	10.2	10.2	10.2	8.6	11.0	7.8	16.5	8.6	9.4	5.5	7.8	7.8	4.7	9.4	4.7	1.6	18.8	8.6	15.7	7.8	15.7	21.2	11.0	11.0	11.0

Island San Juan Skagit Snohomish Whatcom Region

Total Hospitalized Adults - COVID-19 (confirmed or suspected) 7 day average



Values of 1 could be between 1 and 3 - not displayed due to privacy

	2/1 022	2/2 022	3/4 /20	3/1 022	3/2 022	4/1 /20	4/8 /20	4/1 022	4/2 022	4/2 022	5/6 /20	5/1 022	5/2 022	5/2 022	6/3 /20	6/1 022	6/1 022	6/2 022	7/1 /20	7/8 /20	7/1 022	7/2 022	7/2 022	8/5 /20	8/1 022	8/1 022	8/2 022	9/2 /20	9/9 /20	9/1 022	9/2 022	9/3 022	10/ 7/2	10/ 14/202	10/ 21/202	10/ 28/202	11/ 4/202	11/ 11/202	11/ 18/202	11/ 25/202	12/ 2/202	12/ 9/202	12/ 16/202	12/ 23/202	12/ 30/202	1/6 /2023	1/1 023	1/2 023	1/2 023	
Prov. Everett	54.7	38.7	24.7	21	14.4	18.4	13.6	14.4	24.9	32.4	24.6	22.1	28.7	31.6	37	34.3	40.1	36.1	43.7	56.7	56.6	45.4	49	47.1	49.1	34.7	36.1	44.6	31.7	29.9	27.3	26	23.4	24.7	22.9	15.7	18.3	18.4	22.1	20	29.7	41	35.7	38.4	40.3	36.4	24.1	25.3	28.7	24.5
SVH	13	10.7	4.1	4	1	1	1	1	4.3	4.1	1	7.3	15.1	11.3	11.7	9.6	9.1	9.9	15	16.3	7.4	6.7	6.3	1	6.3	6.4	1	5.4	6.3	4.4	9	4.9	1	1	5.6	6.6	6	11.7	8.7	6.7	11.6	14.3	14.9	9.4	12.7	18	10.6	0		
ST Joe	22.8	16	16	14.3	4.9	5.7	5.4	1	1	7	7	8.1	11	11.6	10.6	13.9	19.7	14.4	11.9	14.9	12.3	13.3	16.3	17	16.1	15.9	14.4	9	9	9	8.4	9.4	8.6	10.1	8.3	9	13.1	17.7	15.6	16.5	18.9	22.7	18.6	20.9	19.9	13.6	15.3	14.1	10	0
Swedish Edmonds	8.3	5	1	1	1	1	1	1	6.1	7.6	12.7	15.4	14.1	13	10.7	9.4	9.9	5.1	11.3	7.7	8.6	14	16.4	15	10.4	9.7	6.7	1	1	4.1	1	4.3	1	1	1	5.1	1	7.3	11.9	21.7	18.6	19.6	15.1	16.1	11.6	11.6	13.1	8.4	8	

North Sound BH ASO Walkaway Chart 07/17/22 to 01/28/23



	2022 Wee k 01	2022 Wee k 02	2022 Wee k 03	2022 Wee k 04	2022 Wee k 09	2022 Wee k 11	2022 Wee k 12	2022 Wee k 13	2022 Wee k 15	2022 Wee k 16	2022 Wee k 17	2022 Wee k 18	2022 Wee k 19	2022 Wee k 22	2022 Wee k 24	2022 Wee k 25	2022 Wee k 26	2022 Wee k 27	2022 Wee k 28	2022 Wee k 30	2022 Wee k 32	2022 Wee k 33	2022 Wee k 37	2022 Wee k 39	2022 Wee k 40	2022 Wee k 41	2022 Wee k 43	2022 Wee k 45	2022 Wee k 47	2022 Wee k 48
Cascade Valley Hospital			3													1					1		1							1
Island Hospital				2						1				1								1	1		1	1				
Olympic Medical Center						1			1																					
Peace Island Health																		1												
Providence														1								1								
Providence - Colby		1																												
Providence, Everett																											2			1
San Juan Co Jail																											1			
Skagit Valley						1		1																						
St. Joseph	1			1										1				1			1	1								
Swedish Edmonds															1			1												
Swedish Mill Creek																			1		1									
United General											1	1	1			1				1		1		1				3		
Whidbey Health				2				1				1																		
Whidbey Health ED							1								1		1													